



# PILLARS OF THE ADMINISTRATION

ROADMAP TO KEEPING EKITI WORKING

-  **GOVERNANCE**
-  **YOUTH DEVELOPMENT AND JOB CREATION**
-  **HUMAN CAPITAL DEVELOPMENT**
-  **AGRICULTURE AND RURAL DEVELOPMENT**
-  **INFRASTRUCTURE AND INDUSTRIALIZATION**
-  **ARTS, CULTURE AND TOURISM**

[www.ekitistate.gov.ng](http://www.ekitistate.gov.ng)



# EKHIS NEWS

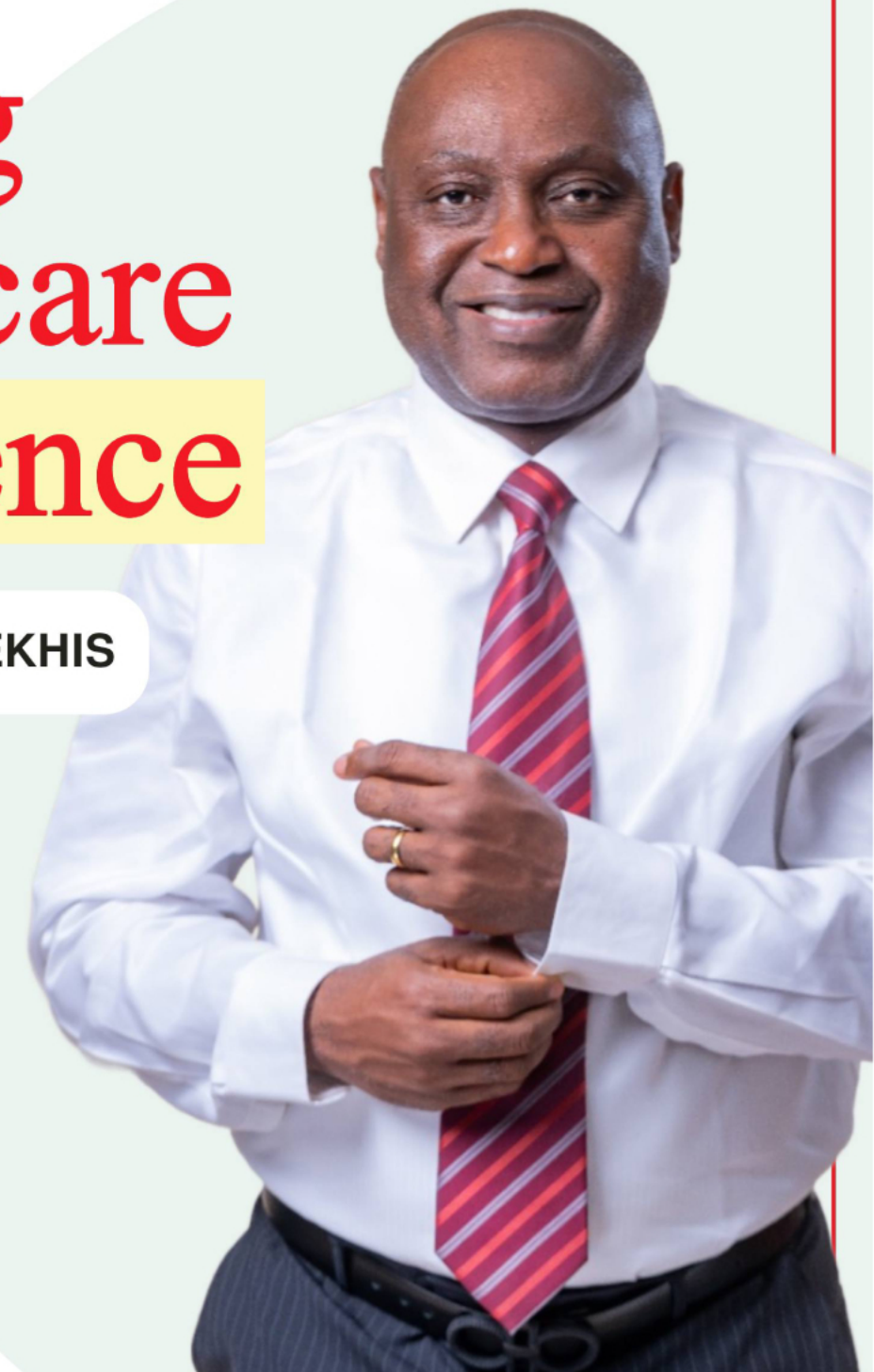


A Publication of Ekiti State Health Insurance Scheme

Second Edition. 2025

# Driving Healthcare Excellence

Key Milestones from EKHIS





# EKITI STATE EQUITY HEALTH PLAN



(Basic Health Care Provision Fund & Ulerawa)



### Maternal Health

- Antenatal care
- Delivery
- Post natal services
- Family Planning



### Child Care

- Child care
- Nutrition
- Diarrhoea, Pneumonia
- Immunization, Malaria
- Moderate Malnutrition



### General

- Collection of card is free
- Consultation is free
- Laboratory Test is Free
- Malaria Treatment for all

**Note:** Every Service At this Facility is Free If charged for any services

Call: 08142989573, 08039353420

**EKHIS... your access to quality health care**

## HC AT THE HOUSE OF ASSEMBLY DURING BUDGET DEFENCE WITH THE MEMBERS OF THE HOUSE OF ASSEMBLY COMMITTEE ON HEALTH AND HIV AIDS.





# TRANSFORMING LIVES THROUGH ACCESSIBLE AND AFFORDABLE HEALTHCARE"

## VISION

Accessible Health for Ekiti Residence



## MISSION

To put in place appropriate health plans and Programs that will ensure access of all Ekiti residents to qualitative and affordable health care services through collective pooling and redistribution of financial resources.

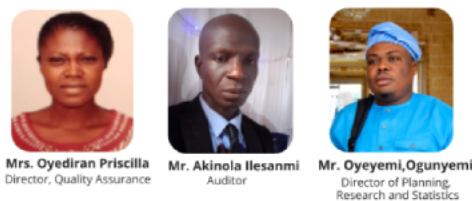
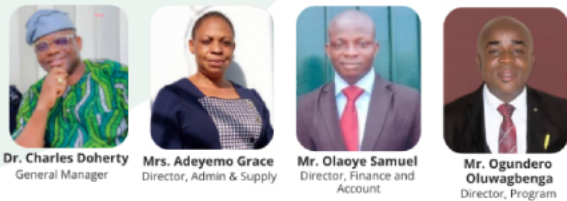
The Ekiti State Health Insurance Scheme (EKHS) is committed to improving the health and well-being of residents by achieving widespread coverage through increased enrollment. Efforts are focused on reaching rural and underserved communities with targeted outreach and education programs to ensure that more residents understand the benefits of health insurance and have access to affordable healthcare. To enhance access to quality services, EKHS has forged partnerships with healthcare providers, including primary healthcare centers, hospitals, and specialized clinics, enabling enrollees to benefit from a wide range of services such as preventive care, maternal and child health, chronic disease management, and emergency care.



EKHS, GM, Dr. Charles Doherty

## MANAGEMENT

Ekiti State Health Insurance Scheme Management team as at December, 2024



## EDITORIAL BOARD

**Editor-in-chief:**  
Oluwabunmi Gbenga Ogundero

**Editor:**  
Wale Obelewaji

**Members:**  
Grace Adeyemo  
Florence Akanbi  
Oyeyemi Ogunyemi  
Samuel Olaoye  
Gbemisola Aregbesola, ICT  
Oyediran Pricilla

**Photographer:**  
Jimoh Ahmed

**Graphic:**  
Olowuro Ayomide



Leveraging digital technology is another critical objective, with the introduction of a mobile application that allows enrollees to access health records, schedule appointments, and make coverage inquiries conveniently. To further improve service delivery, EKHS values community engagement and has established feedback mechanisms to involve residents in shaping the program and addressing challenges. This approach ensures continuous improvement and responsiveness to the needs of the community.

Looking ahead, EKHS aims to expand its services to include mental health support, wellness programs, and telemedicine to provide convenient and comprehensive healthcare solutions.

EKHS aims to provide financial protection for households by reducing out-of-pocket medical expenses. Ensuring low-income families can access coverage without financial burden.



By maintaining transparency, fostering trust, and focusing on long-term health improvements, EKHS is dedicated to creating a healthier and more resilient Ekiti State.

**Contact:**

Ekiti State Health Insurance Scheme  
Phase V, State Secretariat Complex,  
Ado-Ekiti, Ekiti State  
Telephone: 080 3320 3314

**Email:**

ekhis@ekitistate.gov.ng

**PRESENTING A CELEBRATION OF  
REMARKABLE DELIVERY ACHIEVEMENTS.**



**65th NCH BORNO 2024**



## EKITI STATE HEALTH INSURANCE SCHEME STAFF CAPACITY BUILDING



## EKITI STATE HEALTH INSURANCE SCHEME SENSITIZATION



## EKITI RECORDS MAJOR IMPROVEMENT IN HEALTH INDICES RELEASED BY NDHS REPORT



**DR. OYEBANJI FILANI**  
COMMISSIONER FOR HEALTH AND HUMAN SERVICES

### Ekiti State has recorded significant improvements in its health indices

...as neonatal, infant, and under 5 mortality drop by more than 50 per cent. Ekiti State has recorded significant improvements in its health indices.

According to the recently released report of the Nigeria Demographic and Health Survey. The report indicated that neonatal, infant, and under 5 Mortality in the State had reduced by over 50 percent in the past five years.

According to a breakdown of the report, teenage pregnancy has reduced by 30 per cent ; decreased unmet need for family planning by 30 per cent, and increased facility delivery by 14 per cent.

The State Commissioner for Health and Human Services, Dr Oyebanji Filani, noted that with the NDHS report, Ekiti State has surpassed its expected targets set four years ago.

In his words, "45,000 additional under-5 lives have been saved between 2019 and 2024 representing 75% of children under 5 that would have died if we maintain 2018 under 5 mortality figures."

Other strategies, according to Dr Filani, include building aggressive partnership portfolios through demonstration of results, maintaining fiscal fidelity, and ensuring accountability through which more development partners felt comfortable working with the state.

"All these strategies, amongst others, have not only improved health outcomes but also laid a strong foundation for a resilient and sustainable health system in Ekiti State."

Also, the states moved from 31st to 5th best performer in neonatal mortality between 2019 and 2024. Dr Filani, who is also the Chairman of the Nigeria Health Commissioners Forum, said there were key strategies that contributed to the milestone, which was a significant improvement compared to what was obtainable some four years ago.

Filani disclosed that despite high coverage of selected interventions four years ago, the health outcomes of the state remained suboptimal and lagged behind other southwestern states.

# PROGRESS AND ACHIEVEMENTS REPORT

From the Desk of the General Manager

We are excited to share the 2024 overview of the Ekiti State Health Insurance Scheme (EKHIS), a reflection of our collective efforts to achieve accessible, affordable, and high-quality healthcare for all Ekiti State residents. This year has been transformative, marked by progress, challenges, and a clear vision for the future.

## Key Achievements

**Enrollment & Utilization Growth:** EKHIS saw a remarkable increase in enrollment, with the Basic Health Care Provision Fund Program growing from 23,000 to 56,000 enrollees. Service utilization also surged, from 75,000 in 2023 to nearly 100,000 by the end of 2024. The ULERAWA program experienced exceptional growth, with utilization jumping from 114,000 to over 390,000.

**Enhanced Healthcare Delivery:** Beneficiaries now have access to quality healthcare at 177 Primary Health Care centers, 21 secondary, and 3 tertiary facilities across the state. Our partnerships with the Ministry of Health, Hospitals' Management Board, SPHCDA, and EKSDHAMA have been key in improving service delivery and health outcomes.

**Technological Innovations:** EKHIS embraced technology by upgrading our ICT infrastructure, which has streamlined digital enrollment, patient management, and claims processing, driving efficiency and transparency.

**Community Engagement & Awareness:** Our grassroots outreach initiatives, including advocacy and radio programs, have been instrumental in educating residents on the benefits of health insurance and encouraging proactive health-seeking behavior.



**Dr. Charles Doherty**  
GENERAL MANAGER, EKHIS

**Improved Health Indices:** The National Demographic and Health Survey (NDHS) 2019–2024 reports significant improvements in Ekiti State's health indicators, thanks to the vital role of EKHIS.

## Challenges

While we celebrate our progress, challenges remain. We continue to face staffing shortages, infrastructural limitations, and the need for capacity building among focal persons and healthcare providers. These challenges, however, remain surmountable through continued planning and collaboration.

## Looking Ahead

Our focus for the future is to expand coverage, particularly in underserved rural areas, and to further enhance service quality. EKHIS is committed to ensuring that every resident of Ekiti State has access to timely, effective, and quality healthcare.

Thank you for your ongoing support as we continue to work together towards a healthier future for Ekiti State.



We are glad to present the second edition of the Ekiti State Health Insurance Scheme (EKHIS) news letter, EKHIS news. The publication represents yet another exciting achievement in our journey towards improving healthcare access and quality for the people of our dear State.

The Ekiti State Health insurance Scheme was established with a vision to ensure that every resident of Ekiti State has access to affordable and high-quality healthcare services. We recognise the importance of keeping our stakeholders informed about the progress we are making towards this vision. Thus, this news letter will serve as a valuable platform for sharing insights, updates and success stories about our agency's activities and achievements.

In this edition, we have curated a collection of articles and reports that highlight the collaborative efforts of the State government, Ministry of Health and Human Services, and our esteemed partners in the field of health insurance. Together, we are working tirelessly to bridge the gaps in healthcare access and delivery across the State.

We are proud to announce that our efforts have resulted in increased healthcare coverage, reducing the financial burden on families and individuals while improving the overall health outcomes of our community.



**WALE OBELEWAJI**  
Editor

Going forward our commitment to transparency, accountability and Excellence remains unwavering. We will continue to strive for excellence in administration of healthcare services, ensuring that every citizen of Ekiti State can access healthcare without fear of financial hardship.

We encourage you, our readers, to explore the various sections of this newsletters to gain a deeper understanding of our journey, our achievements, and our vision for the nearest future. Your feedback and suggestions are invaluable to us, as they will help us enhance the contents and relevance of future editions.

Conclusively, we are confident that with the continued support and collaboration of our stakeholders and partners, we will achieve our goal of making quality healthcare a reality for all residents of our dear State.

Thank you for joining on this journey, and we hope you find this edition informative and inspiring.

# EKITI STATE HEALTH INSURANCE SCHEME ON MEDICAL OUTREACH @ ILOKUN ADO-EKITI

# HONOURABLE COMMISSIONER FOR HEALTH AND OTHER STATE STAKEHOLDERS IN INTERFACE MEETING



# FROM POLICY TO IMPACT: TRANSFORMING LIVES THROUGH THE EKITI HEALTH INSURANCE SCHEME IN 2024.



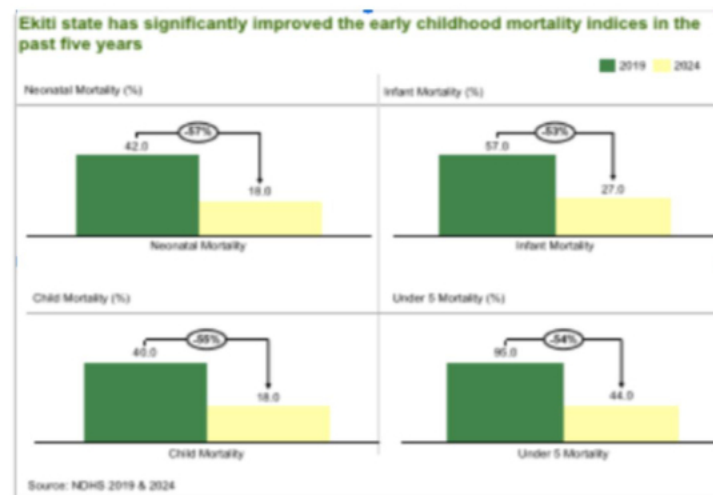
The health sector in Ekiti State has made significant strides in reducing mortality rates. Between 2019 and 2024, the neonatal mortality rate saw a remarkable 50% reduction, dropping from 42 to 18 deaths per 1,000 live births. Similarly, the infant mortality rate was halved, decreasing from 57 to 27 deaths per 1,000 live births. The under-5 mortality rate also experienced a substantial decline of 49%, reducing from 95 to 44 deaths per 1,000 live births. These improvements highlight the impact of targeted healthcare interventions and underscore the ongoing commitment to enhancing child health outcomes in the state.

## Introduction

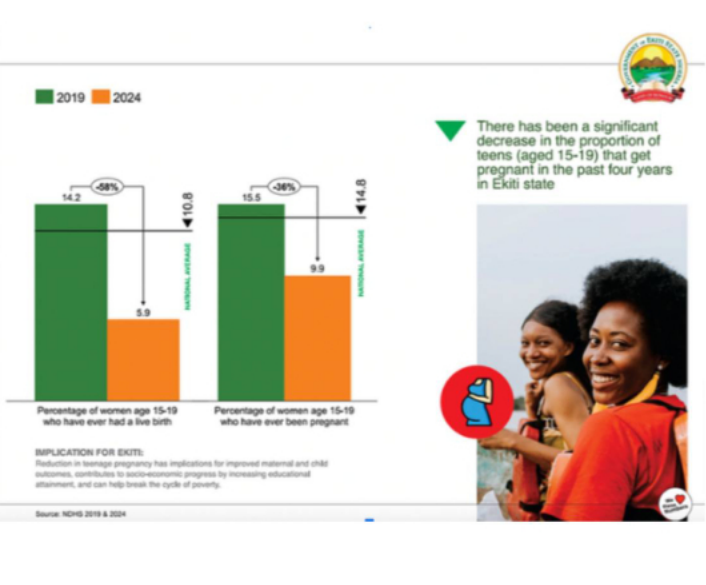
Ekiti State has made significant strides in improving its health indices, as evident from the National Demographic and Health Survey (NDHS) reports from 2019 to 2024. This report highlights the state's achievements and the crucial role played by the Ekiti State Health Insurance Scheme (ESHIS) in attaining these successes.

## Key Achievements

### Reduced Mortality Rates ✔



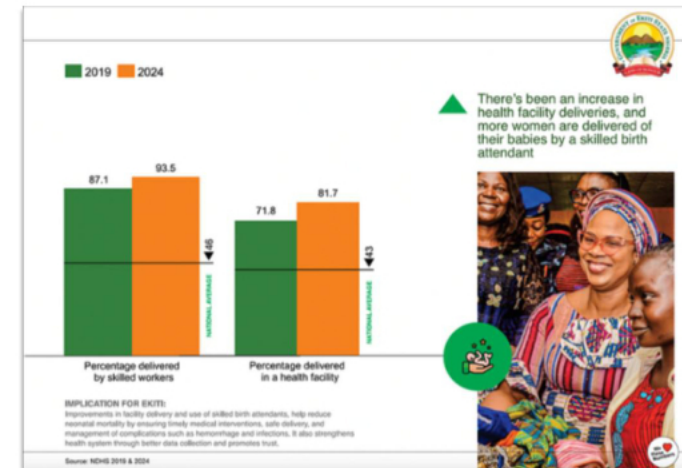
### Improved Maternal Health ✔



Over the past five years, Ekiti State has seen significant improvements in key maternal and reproductive health indicators. The teenage pregnancy rate has dropped substantially, from 23% in 2019 to 16% in 2024, reflecting a 30% reduction. This decline can be attributed to ongoing efforts in education, awareness, and access to family planning services.

The state has also witnessed a notable increase in the facility delivery rate, which rose from 60% in 2019 to 74% in 2024, marking a 23% improvement.

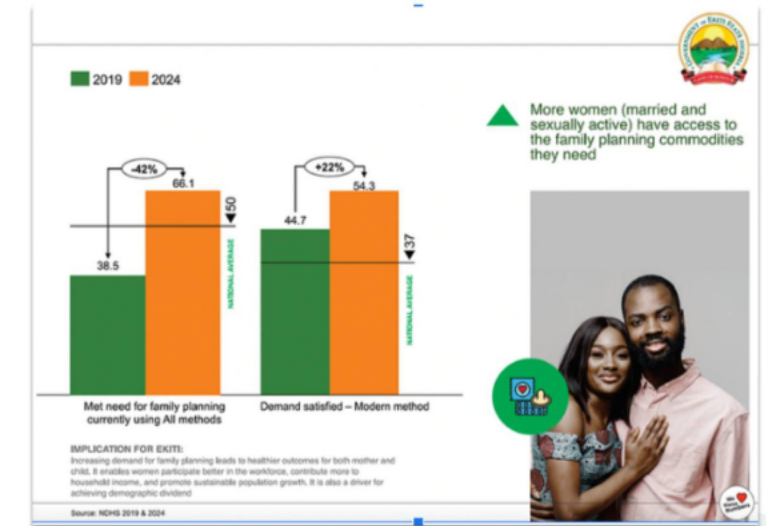
This shift underscores the growing trust in healthcare facilities for safe childbirth and the government's commitment to improving maternal health infrastructure.



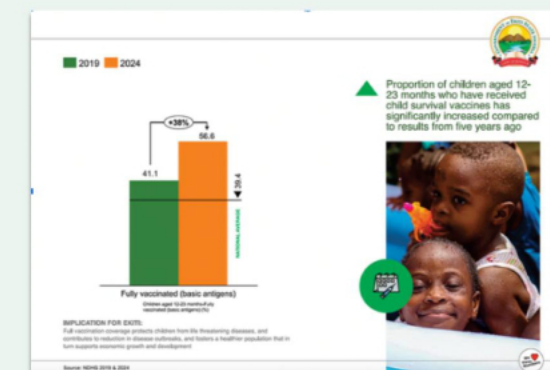
Additionally, antenatal care coverage has experienced a remarkable increase, growing from 70% in 2019 to 90% in 2024, a 29% rise. This expansion in antenatal care access highlights the progress made in ensuring that more expectant mothers are receiving the necessary care, education, and support throughout their pregnancies, contributing to better health outcomes for both mothers and babies. These improvements are a testament to the state's concerted efforts to strengthen maternal and child health services and reduce health risks in the population.

In addition to the significant improvements in maternal and child health, Ekiti State has also made considerable progress in other key health areas, including the increase in facility deliveries, the uptake of family

The uptake of family planning services has seen a steady increase, with more couples and individuals embracing family planning options. This shift is a result of comprehensive awareness campaigns, improved access to contraceptive methods, and enhanced education on reproductive health, helping families make informed decisions about the number and timing of their children.



Immunization coverage has also expanded, ensuring that more children are protected from preventable diseases. The state's ongoing efforts to promote and facilitate immunization services have led to increased participation, resulting in higher vaccination rates and improved overall public health. Together, these advancements in facility delivery, family planning, and immunization are key components of Ekiti State's broader strategy to enhance health outcomes, reduce preventable diseases, and promote healthier families.



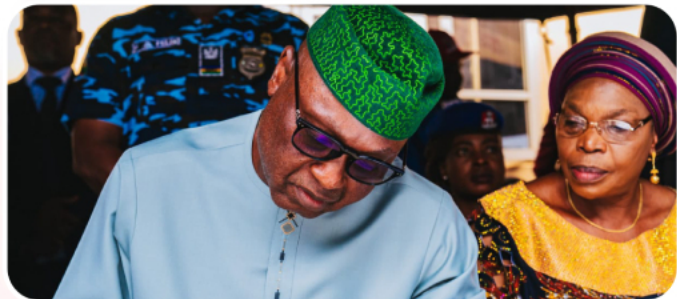
## Conclusion

Overall, the EKHIS equity programs have been instrumental in promoting health equity and improving access to critical healthcare services, ultimately leading to healthier families and communities in Ekiti State. These efforts align with the state's broader goal of enhancing maternal and child health and reducing health disparities among its population.

*MLS Ogundero Gbenga,  
Director of Programs, EKHIS*



**HIS EXCELLENCY JOINED BY DEPUTY GOV, MINISTER OF STATE FOR HEALTH  
HONORABLE COMMISSIONER FOR HEALTH DURING THE MOU SIGNING  
CEREMONY OF THE UPGRADE OF STATE SPECIALIST HOSPITAL  
IKOLE-EKITI TO FEDERAL MEDICAL CENTER IKOLE-EKITI**



**EKITI STATE HEALTH INSURANCE SCHEME  
RADIO PROGRAM AT MIDAS, NEW CRUISE, AND BSES**



**DISTRIBUTION OF WORKING TOOLS TO LGAS  
HEALTH CARE WORKERS FOR QUALITY IMPROVEMENT.**



# EKITI STATE HEALTH INSURANCE SCHEME UPDATES

## Achievements



### Improved Access to Maternal and Child Health Services

- The program prioritized maternal and child health, offering a range of cost-effective services such as antenatal care (ANC), safe delivery, postnatal care (PNC), and immunization for children.
- The focus on case-bundled services has helped streamline care delivery for mothers and children in participating facilities.



### Improved Health Outcomes

Focused efforts led to measurable progress in health indicators:

- Skilled birth attendance increased from 87.1% to 93.5%.
- Full immunization coverage improved by 38%, while neonatal, infant, and under-5 mortality rates decreased by 57%, 53%, and 54%, respectively. (NDHS, 2024)



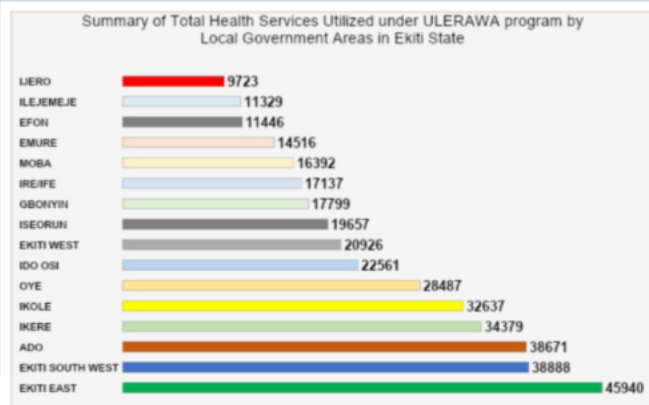
### Data-Driven Decision-Making

- Ulerawa facilitated improved data collection, monitoring, and reporting at the primary healthcare level, enabling evidence-based decision-making for program expansion and future interventions.



### Financial Protection for Vulnerable Populations

- The Ulerawa program extended health coverage to vulnerable groups, reducing out-of-pocket expenses and providing financial risk protection for low-income households.



In 2024, Ekiti East led in service utilization (45,940), while Ijero recorded the lowest (9,723), highlighting significant disparities. Moderate usage was seen in Ilere (34,379) and Ikole (32,637), suggesting the need for balanced service delivery across LGAs.

### Ulerawa Program Monthly Utilization Overview (Jan-Dec 2024)

MONTH	ANC	MALARIA	IMMUNIZATION	DELIVERY	FAMILY PLANNING	OTHER CU 5 SERVICES	TOTAL
JAN	4024	11445	9912	392	2319	3041	31133
FEB	3971	11840	13220	413	2383	3804	35631
MAR	3430	10153	11446	489	1819	3129	30466
APRIL	3827	13417	11578	457	2337	3219	34835
MAY	3699	14638	10866	488	2421	2646	34758
JUNE	2630	11478	9446	321	1868	2227	27970
JULY	3820	17461	12086	416	2225	3112	39120
AUG	3023	15098	9657	377	1895	2101	32151
SEP	3295	12920	9722	401	1730	2302	30370
OCT	3157	14113	9233	462	1719	3497	32181
NOV	3083	13327	8461	437	1569	2788	29665
DEC	2532	9375	6756	312	1514	1719	22208
TOTAL	40491	155265	122383	4965	23799	33585	380488

Service utilization peaked in July with 39,120 total utilizations, primarily driven by Malaria treatment and Immunization services. December saw the lowest utilization at 22,208, with significant drops in Malaria and Immunization services. Family Planning and ANC services remained relatively consistent throughout the year. Malaria treatment showed significant monthly fluctuations, while Immunization services maintained steady demand.

S/N	Facility	Total services Utilized
1	Comprehensive Health Centre, Okesha	15399
2	Comprehensive Health Centre, Omuooke 2	9657
3	BHC Igbara Odo	9279
4	Comprehensive Health Centre Atiba	9071
5	Basic Health Centre, Iludofin	7849
6	Comprehensive Health Centre, Afao, Ikere	6383
7	Basic Health Centre, Iworo	6194
8	Methodist Comprehensive Health Centre Ikole	5001
9	Comprehensive Health Centre Ilisa	4661
10	Basic Health Centre Ogotum	4915
11	Basic Health Centre Ilisa	4721
12	Comprehensive Health Centre, Oye	4605
13	Basic Health Centre Ayegbaju	3996
14	Comprehensive Health Centre Iworo	3916
15	Comprehensive Health Centre, Otun	3932
16	Basic Health Centre, Ijan I	3820
17	Basic Health Centre Irona	3347
18	Basic Health Centre Odo Ado	3513
19	Comprehensive Health Centre, Igbemo	2961
20	Comprehensive Health Centre, Ifaki	2019

### Healthcare Utilization Analysis Across LGAs in Ekiti State Under the BHCPF in 2024

LGA	Total visit	Refferal	ANC visit	Normal Delivery	URTI	Malaria	Other Services
ADO	13987	1079	3272	230	1390	2123	5944
OYE	11305	140	488	99	1402	4391	4795
EKITI EAST	10629	48	725	39	1553	4685	3585
GBONYIN	8787	84	443	32	1488	3494	3252
EKITI S OUTH WEST	7597	126	134	32	1430	2791	3087
IDO/OSI	6905	133	513	77	1119	2267	2806
IKERE	5996	151	603	27	1234	2055	1960
IKOLE	5364	126	426	60	602	1819	2340
MOBA	5241	48	183	27	667	1586	2745
IJERO	4800	68	201	24	419	1617	2486
ILEJEMEJE	4415	11	131	18	644	1703	1910
EKITI WEST	4183	49	128	30	1074	1942	966
EFON	3699	12	176	11	613	1419	1470
ISE ORUN	3555	18	134	16	839	1902	645
IRE/IFE	3475	134	257	20	869	1609	600
EMURE	2603	26	89	7	265	1424	807
TOTAL	102541	2253	7903	749	15608	36827	39398

Ado led in total visits (13,987), referrals (1079), antenatal care visits (3,272), and normal deliveries (230), highlighting its dominance across key healthcare metrics. Ekiti East recorded the highest malaria cases (4,575), contributing significantly to the total malaria burden of 36,827 cases (37.8% of all reported cases). Upper Respiratory Tract Infections (URTI) were also prevalent, with a total of 15,608 cases, led by Ekiti East (1,553) and followed by Gbonyin (1,488). Emure consistently reported the lowest figures, with only 2,603 total visits, 26 referrals, 89 antenatal care visits, and 7 normal deliveries, indicating gaps in healthcare access or utilization. Other LGAs such as Oye (11,305 visits, 4,391 malaria cases) and Gbonyin (8,787 visits, 3,494 malaria cases) also showed significant activity, emphasizing the need for targeted interventions to address localized healthcare challenges.

## Conclusion

In conclusion, the total utilization of healthcare services in Ekiti State in 2023 and 2024 under the BHCPF and Ulerawa programs illustrates a positive trend in accessing healthcare. In 2023, 76,886 services were utilized under the BHCPF, and 114,315 services were accessed through Ulerawa, totaling 191,201 services.

In 2024, this rose significantly with 102,541 services under the BHCPF and 380,488 services under Ulerawa, bringing the total utilization to 483,029 services. Overall, the EKHIS equity programs have been instrumental in promoting health equity and improving access to critical healthcare services, ultimately leading to healthier families and communities in Ekiti State.

These efforts align with the state's broader goal of enhancing maternal and child health and reducing health disparities among its population.



Mr Oyeyemi Ogunyemi

Director of Planning, Research and statistics

# HC & SMOH WITH DG NACA & HER TEAM ON OFFICIAL INAGURATION OF TWG FOR PMTCT

# SUMMARY OF SOME ACTIVITIES IN EKITI STATE HEALTH INSURANCE IN 2024



## 1. Sensitization Through Radio Programs:

Thirteen radio slots on Midas, BSES and News Cruise Radio stations were utilized to educate Ekiti residents on health insurance programs.

## 2. Advocacy Visits & Community Mobilization:

Advocacy visits were made to MDAs and other relevant stakeholders to promote health insurance programs on different health plans.

## 3. Verification of Compliance with BHC PF Guidelines:

Compliance with BHC PF guidelines by health facilities was verified through calls made by EKHS staff to approximately 56,560 beneficiaries, including Pregnant women(14,700), Children under five(19,800), Indigents(5,650), Elderly residents (5,650), Women of childbearing age(5,650), and People with disabilities(5000).

**4. Interactive Meetings:** Interactive meetings were held with development partners, community-based organizations, and Non-governmental organizations relevant to the program.

## 5. Medical Outreach:

A medical outreach program was conducted in Ilokun, leveraging on Facility's quality of care.

## 6. Capacity Building of EKHS Staff:

EKHS staff underwent capacity-building programs on BHC PF, Ulerawa program, Administrative procedures as it affect civil service rules and Financial Management to enhance officers' performance and also a robust training by Clinton Health Access Initiative on health financing in achieving Universal Health Coverage

## 7. Update of BHC PF App:

The BHC PF app was updated to include pensioners, indigents, people with disabilities, and sickle cell warriors.

## 8. Validation of Enrollees:

Enrollees were validated, and necessary edits were made for delivered pregnant women, children above five years, relocated, and deceased beneficiaries.

These activities demonstrate the EKHS commitment to enhancing healthcare services and promoting health financing in Ekiti State.



*Mr Ogundero Oluwagbenga  
Director of Programs*

# HC, ADDRESSING PARTICIPANTS DURING 2024 ANNUAL OPERATIONAL PLAN (AOP) DEVELOPMENT IN ADO-EKITI

# CHAI CONDUCTING CAPACITY BUILDING FOR SHIA

